

GE Healthcare

Voluson E6

Extraordinary vision



healthymagination



imagination at work





Your foundation for extraordinary vision.

The Voluson* E6 is the entry-level system in the Expert Series platform, providing exceptional image quality in a smart system designed to help meet your daily needs.



View a video on the Voluson Expert Series.

The powerful Voluson E6 can be the cornerstone of your practice. It's designed specifically to help give you the exceptional vision you need today with the flexibility you need for your changing needs. This versatile system delivers expandable capabilities to grow with your practice.

Built on the remarkable Expert Series platform, the Voluson E6 combines advanced probe technology plus innovative hardware and software architecture. Every component works together – processing multiple data points simultaneously in real-time to deliver exceptional images. The Voluson E6 helps you to see tiny details at early stages.

Voluson next generation volume ultrasound technologies will amaze you!

Volume ultrasound enhancements

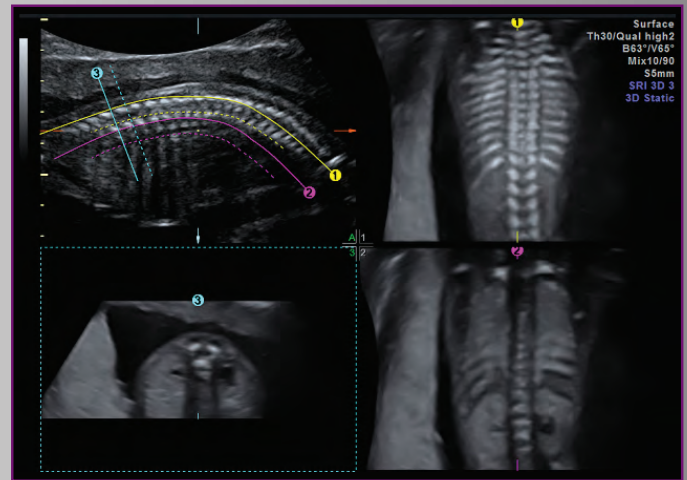
Voluson second generation dynamic rendering engine – The enhanced dynamic rendering engine and innovative probes help provide you extraordinary image quality and efficient operation.

HDlive* – This Voluson second-generation rendering tool helps increase depth perception and provide exceptional anatomical realism to help enhance clinical confidence. This imaging capability can help you achieve a deep understanding of relational anatomy and enrich patient communication.

Advanced Volume Contrast Imaging (VCI) with OmniView – This tool can help improve contrast resolution and visualization of the rendered anatomy with clarity in any image plane, even when viewing irregularly shaped structures.



HDlive rendering applied to 3D image to help enhance clinical confidence



Advanced VCI with OmniView

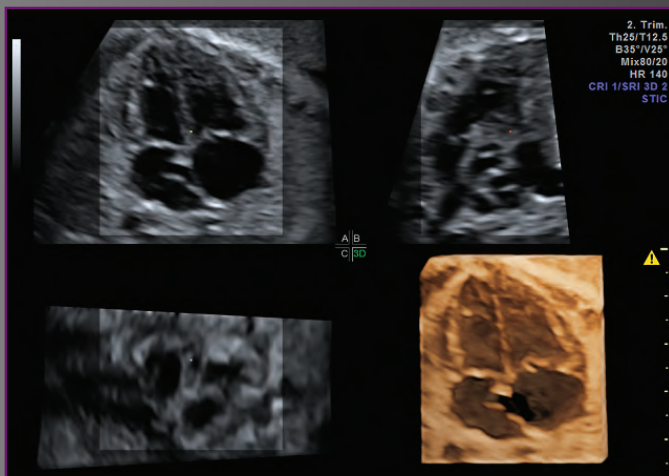


Simply extraordinary diagnostic confidence.

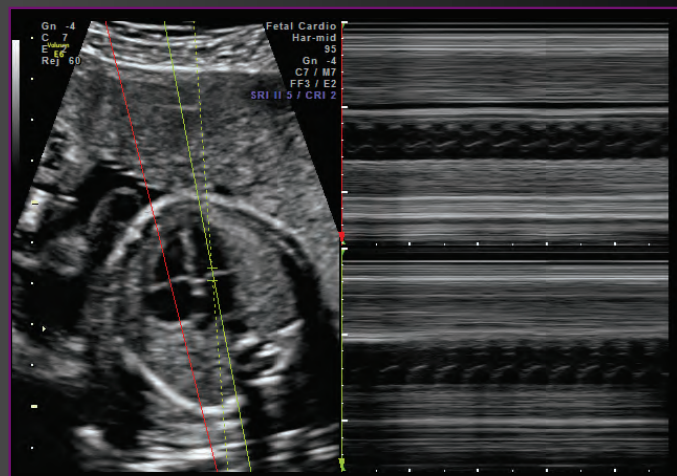
Focus on image quality technology

Fetal cardiac assessment technology – Voluson E6 helps evaluate the structure and function of the fetal heart with innovative fetal echo imaging technologies including:

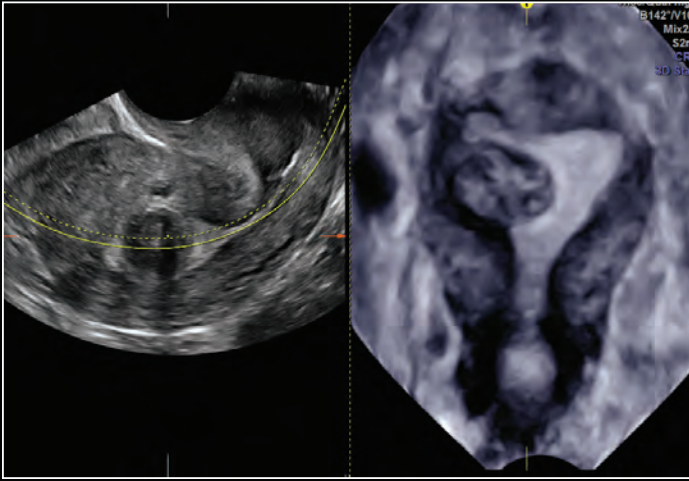
- STIC (Spatio-Temporal Image Correlation) enables detailed three-dimensional images of the heart that can be viewed in motion. Clinicians can visualize an entire fetal heart cycle – information that can help improve detection of heart defects with confidence.
- Anatomical M-mode facilitates arrhythmia assessment and cardiac measurements.



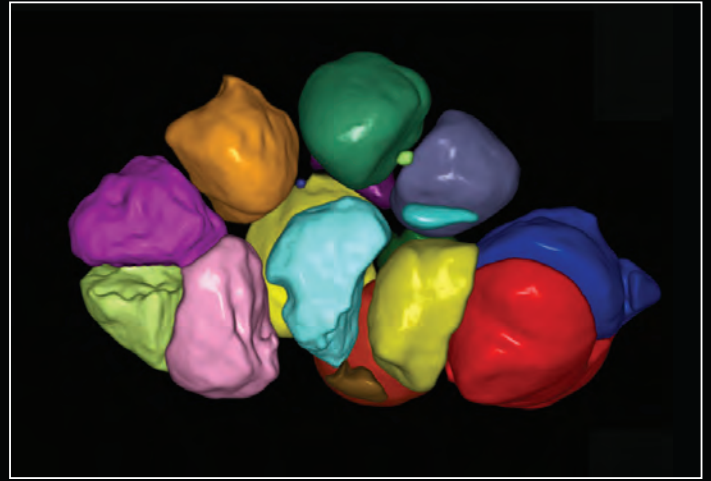
STIC applied to fetal heart



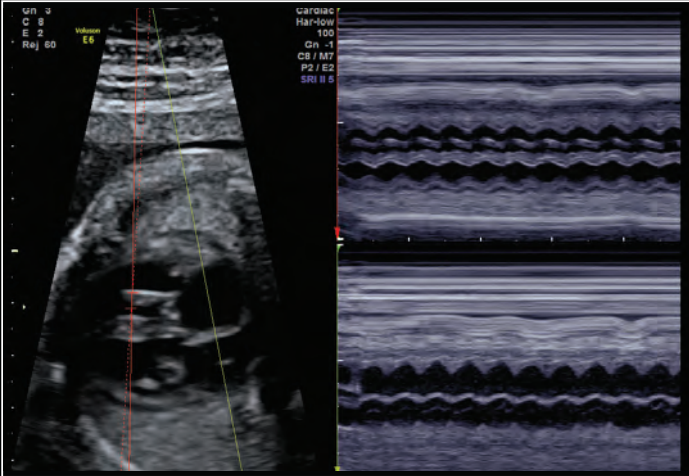
Anatomical M-mode applied to fetal heart



Advanced VCI with OmniView displaying fibroid in coronal view of the uterus



SonoAVC[®] follicle of stimulated ovary



Anatomical M-mode of fetal heart displaying tracings of both atria and ventricles



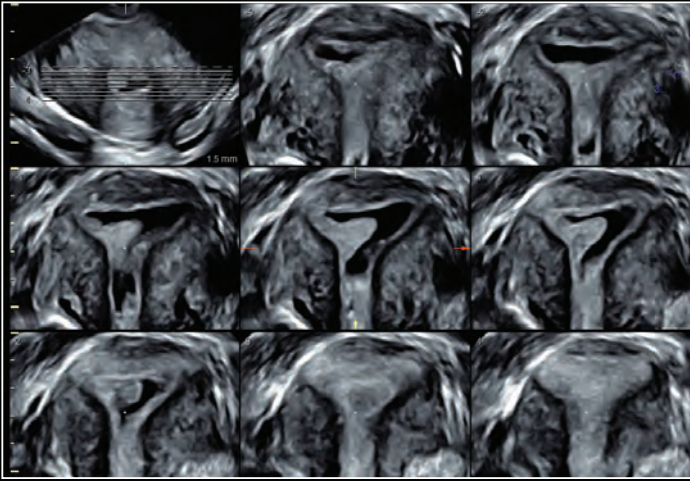
Nuchal translucency measured with SonoNT



Fetal kidneys displayed with TUI



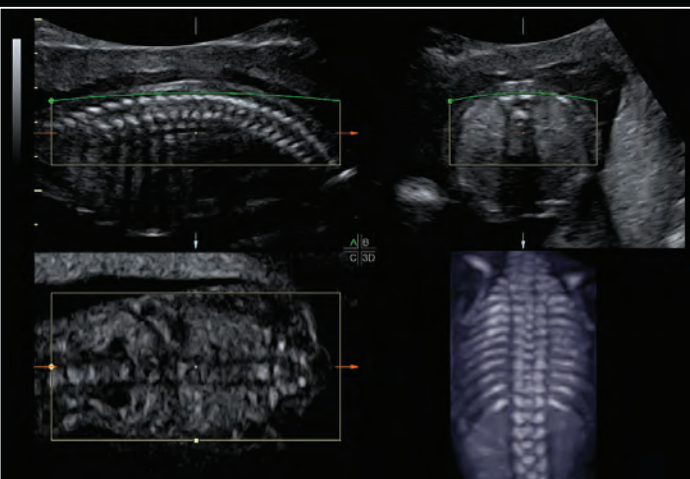
HDlive of a 30 week fetus to help enhance clinical confidence.



TUI and VCI displaying intrauterine polyp in the coronal plane



24 week fetal diaphragm with SRI



Multiplanar and rendered volume of 20 week fetal spine



Innovations in probe technology

Extraordinary vision starts with advanced probe technology. The Voluson Expert Series supports a wide range of 2D and 3D probes, enabling quality images in first trimester and complex gynecological exams.

RAB6-D ultra-light volume probe – User fatigue may be reduced with this next generation GE volume probe that is 40% lighter than the previous GE version. Its ergonomic design provides outstanding image quality in 2D and 3D/4D, features a pinless connector and sits comfortably in the clinician's hand.

C4-8-D high frequency abdominal probe helps provide exceptional high resolution obstetrical images during each trimester.

Automation to help achieve more confident exams

We understand your need for exam consistency, for data that can be consistently reproduced, regardless of which clinician is performing the ultrasound exam.

So, we continue to develop automated tools that help provide assistance in complicated exams and produce results you can count on.

SonoBiometry – Performs a semi-automatic measurement of the head (both head circumference and bi-parietal diameter), abdomen and femur. This tool can help enhance clinical workflow through helping reduce keystrokes to perform biometry measurements.

SonoNT (Sonography-based Nuchal Translucency) and SonoIT (Sonography-based Intracranial Translucency) – Voluson technologies that help provide semi-automatic, standardized measurements of the nuchal and intracranial translucency as early as 11 weeks. Both tools can integrate easily into your workflow. SonoNT helps avoid the inter-and intra-observer variability that comes with manual measurements, and helps provide you with the reproducibility you demand.

SonoAVC*follicle* (Sonography-based Automated Volume Count *follicle*) – Automatically calculates the number and volume of hypoechoic structures in a volume sweep, helping improve efficiency and workflow of follicular assessment.

SonoVCADheart* (Sonography-based Volume Computer Aided Display *heart*)** – Helps standardize image orientation of the fetal heart by providing views automatically obtained from a single volume acquisition.

SonoVCAD*labor* – Helps evaluate second-stage labor progression, and automatically documents the labor procedure with objective ultrasound data.



Fully-articulating arm

- Monitor turns independently of console to help improve visibility

Adjustable console

- Height adjusts electronically to user preference
- Console “floats” and smoothly locks into place
- Console keys are right where you need them

Easy transport

- One of the lightest and smallest premium consoles available
- Four-wheel swivel with steer and lock

19-inch, high-resolution flat screen monitor

- Large screen helps reduce eye fatigue
- Large image size, picture area and clipboard size helps provide visibility and clarity[†]
- Customizable screen enables side-by-side comparisons of current and previous exam results

Intuitive user interface

- Few keystrokes and manipulations
- 3D manipulations from trackball or rotation knobs
- Separate 3D and 4D buttons to help reduce keystrokes

[†]As compared to prior version.

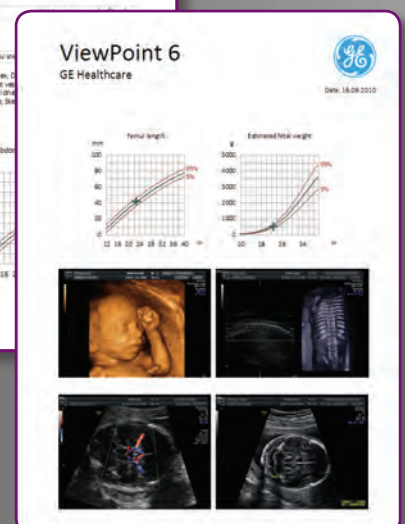
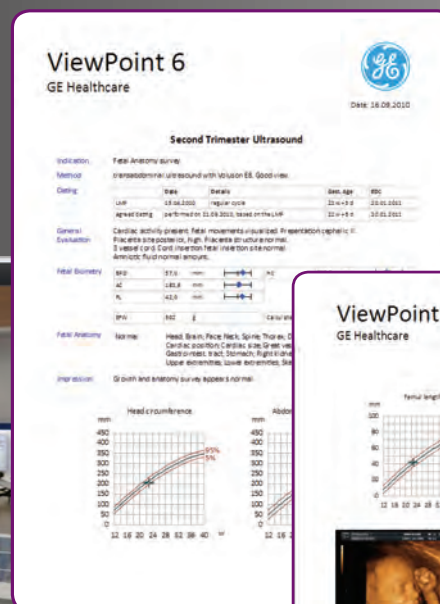
Innovating the Voluson E6, we are committed to keeping the clinicians who use it our priority. An intuitive system that is enjoyable to use on a daily basis. An ultrasound with an ergonomic design to help reduce user fatigue, strain and repetitious actions. With customizable and automated software features to help reduce workflow and produce consistent results. A user-friendly system that allows you to focus more on the patient while scanning.

Extraordinary workflow efficiency

ViewPoint image and data management solution

ViewPoint* 6 offers a powerful and comprehensive solution to help streamline ultrasound archiving and reporting.

- Store information about your patient's medical and exam history, images, and examination details in one place
- Use presets for your most common exams
- Help save time by transferring image and measurement data with one click
- Auto-populate your report to help reduce clicks and data entries
- Interface with enterprise-wide systems, such as EMR and PACS for data when and where you need it
- Optimize, manipulate and analyze volume ultrasound data offline which may free your ultrasound system for imaging more patients
- Utilize SonoAVC*follicle* within ViewPoint and 4DView, and generate follicle measurements





Join the club. VolusonClub.

VolusonClub is an online network of Voluson ultrasound users. Inside VolusonClub you will have access to tools and resources. These materials can help you enhance your knowledge of system operation, and teach techniques to help you improve your productivity.

Among the benefits of membership are:

- Educational videos on basic and advanced topics
- Tips and tricks
- White papers about clinical benefits of Voluson technology
- Listings of tradeshow and educational courses where GE will be attending
- Information on Voluson products and upgrades
- And much more!

Learn, Network, Share at www.volusonclub.net.

We're beside you all the way.

- Excellent service and support
- Remote applications support
- In-depth, hands-on training
- On-site applications training
- Wide range of financing options
- Commitment to innovation and a clear upgrade path

About GE Healthcare

GE Healthcare provides transformational medical technologies and services that are shaping a new age of patient care. Our broad expertise in medical imaging and information technologies, medical diagnostics, patient monitoring systems, drug discovery, biopharmaceutical manufacturing technologies, performance improvement and performance solutions services help our customers to deliver better care to more people around the world at a lower cost. In addition, we partner with healthcare leaders, striving to leverage the global policy change necessary to implement a successful shift to sustainable healthcare systems.

Our "healthymagination" vision for the future invites the world to join us on our journey as we continuously develop innovations focused on reducing costs, increasing access and improving quality around the world. Headquartered in the United Kingdom, GE Healthcare is a unit of General Electric Company (NYSE: GE). Worldwide, GE Healthcare employees are committed to serving healthcare professionals and their patients in more than 100 countries. For more information about GE Healthcare, visit our website at www.gehealthcare.com.

Environmentally responsible for future generations.

The Voluson E6 ultrasound system is among the most energy-efficient in the industry. That means with every image you'll be using less energy, saving money and contributing to a better environment. It's part of the GE commitment to invest in innovative solutions to environmental challenges while empowering you with advanced tools for healthcare delivery.

A focus on improving healthcare

Better care for more people. Healthymagination is our commitment to continuously develop innovations focused on reducing cost, increasing access and improving quality of patient care. Voluson's suite of automated technologies are Healthymagination validated. This validation helps ensure that clinicians will not only reduce costs through improved efficiencies, but may also increase quality of care through standardization and ease of automation.

©2013 General Electric Company – All rights reserved.

General Electric Company reserves the right to make changes in specifications and features shown herein, or discontinue the product described at any time without notice or obligation. Contact your GE Representative for the most current information.

GE and GE Monogram are trademarks of General Electric Company.

GE Medical Systems Ultrasound & Primary Care Diagnostics, LLC, a General Electric company, doing business as GE Healthcare.

* Trademark of General Electric Company.

GE Healthcare
9900 Innovation Drive
Wauwatosa, WI 53226
U.S.A.

DOC1261959

