

DC-N6

Diagnostic Ultrasound System



Rotatable control panel
Provides free up, down, right and left movement



Palm-based control panel design



Four transducer connectors and considerate color ring design



15 inch LCD monitor
Supports high resolution up to 1280×1024 pixels

iPower Intelligent power solution

- Stable power supply system
- Uninterrupted scanning up to 2h
- Rechargeable during scanning
- Low battery warning



DISTRIBUTOR:



MINDRAY is a trademark of Shenzhen Mindray Bio-Medical Electronics Co., Ltd. Specifications subject to changes without prior notice.
© 2010 Shenzhen Mindray Bio-Medical Electronics Co., Ltd. All rights reserved.
P.N. ENG-DC-N6-420285x2-20101105

mindray

Mindray is listed on the NYSE under the symbol "MR"
Mindray Building, Keji 12th Road South, High-tech Industrial Park,
Nanshan, Shenzhen 518057, P.R. China
Tel: +86 755 26582888 Fax: +86 755 26582680
E-mail: intl-market@mindray.com Website: www.mindray.com



DC-N6 ^{NEW}

Diagnostic Ultrasound System



mindray
healthcare within reach

DC-N6 Diagnostic Ultrasound System

Mindray's DC-N6 is a well-balanced ultrasound system for general purpose. It is versatile and reliable, meeting the demands of virtually any clinical setting, especially in the fast-paced environment of radiology today

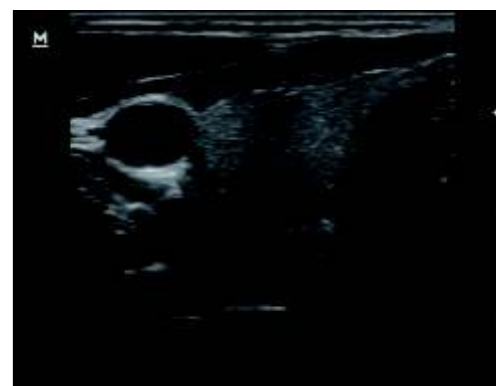


Additionally DC-N6 sets the new standard for cart-based color Doppler ultrasound. The revolutionary built-in battery, light weight, compact size, and the fold down mechanism of the display allow DC-N6 to fit perfectly into every medical environment from room to room or floor to floor.

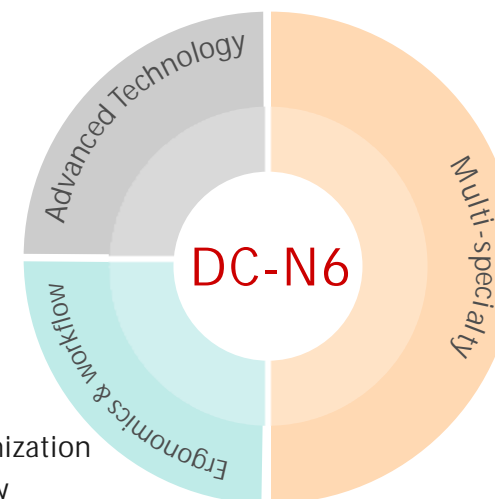
To continue Mindray's commitment to making healthcare within reach, DC-N6 is along with professional service support and continuous software-based evolution. These keep you on the edge of the latest technology and protect your investment greatly.



- iClear™: speckle noise reduction
- iScape™: panoramic imaging
- iBeam™: spatial compounding imaging
- Phase shift tissue harmonic imaging
- Broadband and multi-frequency transducer technology for increased details and contrast resolution

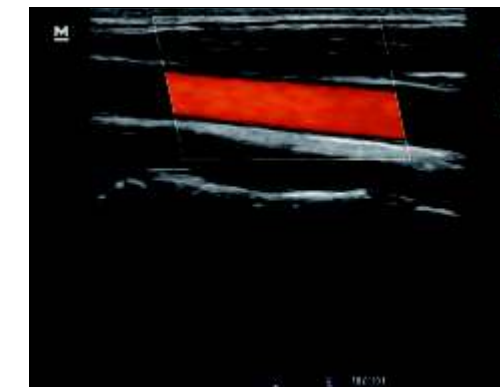


- iTouch™: one-button image optimization
- iZoom™: one button automatically expanding image to full screen
- iRoam™: wireless data transfer solution
- Network storage: direct connection between PC and ultrasound system
- Complete DICOM 3.0 solution
- iPower: intelligent power solution
 - Stable power supply system
 - Uninterrupted scanning up to 2h
 - Rechargeable during scanning
 - Low battery warning



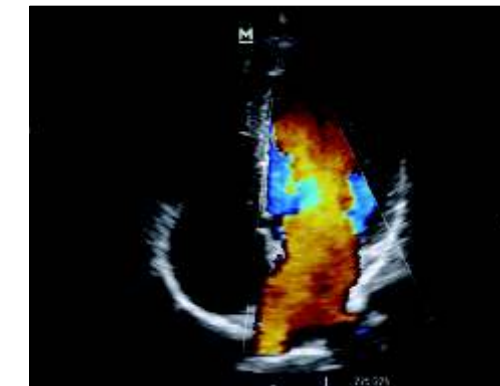
Radiology application

- Abundant exam modes and rich series of probes for specific application
- High resolution imaging based on advanced technologies
- Trapezoidal imaging
- Complete clinical measurement and analysis packages
- User programmable measurement and calculation for operator preferences



OB/GYN

- Complete OB formulae and professional report templates
- Smart 3D™: Free-hand 3D imaging
- New transvaginal probe: large angle of view and light weight elevate your scanning greatly, meanwhile the curved-handle design is especially useful for the biopsy practice
- Large-scale pan zoom and spot zoom function make it more powerful to visualize small structure such as NT



Cardiovascular

- Auto real-time calculation for PW mode
- IMT: Auto trace and measurement of intima-medica thickness
- Free Xros™: anatomic M-mode imaging
- Auto LV quantification

