

OLYMPUS®

Olympus is about life. About photographic innovations that capture precious moments of life. About advanced medical technology that saves lives. About information- and industry-related products that make possible a better living. About adding to the richness and quality of life for everyone. Olympus. Quality products with a **FOCUS ON LIFE**

ULTRASONIC
PROBE

Ultrasonic Probe RU-75M-R1/RU-12M-R1

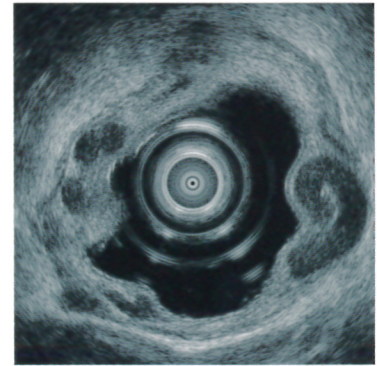
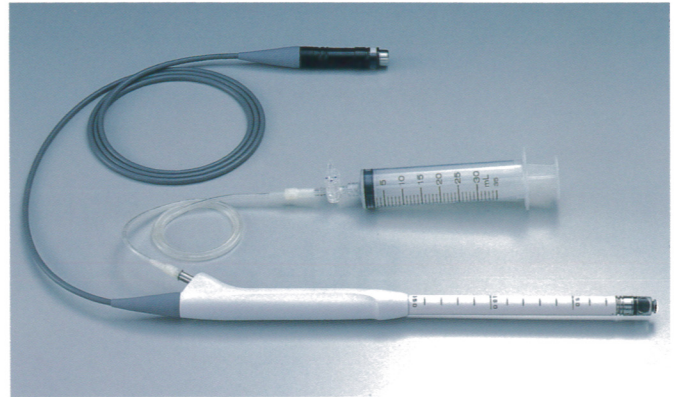
Exclusive Rigid Probes For High-Resolution Rectal And Anal Endosonography



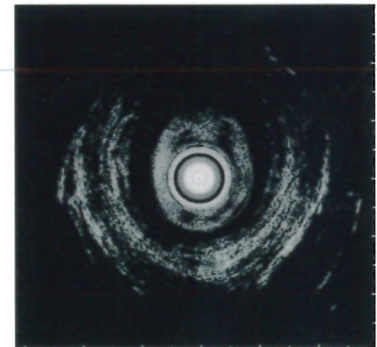
High-Sensitivity 7.5 MHz And 12 MHz High-Resolution Rigid Probes With Narrow Diameter And Lightweight Design For Easy, Cost-Efficient Ultrasound Observation Of The Rectum And Anus

To make endosonography of the rectum and anus easier and less invasive, while maintaining the high-resolution imaging capability you need for optimum observation, Olympus has developed a line of rigid ultrasonic probes designed to function without the assistance of an endoscope. Two types are available — one with 7.5 MHz output for visualization of deep areas, and one with 12 MHz output for the best possible high-resolution ultrasound images. Both probes are compact and lightweight, featuring a slim insertion tube that measures only 12 mm in diameter to ensure optimal insertion capability. Naturally, these probes are fully compatible with conventional endoscopic ultrasound systems, assuring maximum system flexibility and an excellent cost-performance ratio.

- Rigid design facilitates observation of the rectum and anus.
- Slim insertion tube with a maximum diameter of 12 mm minimizes invasiveness.
- Two types available: 7.5 MHz and 12 MHz.
- Lightweight design — one third the weight of conventional rectal and anal ultrasonic probes.
- Can be connected to the EU-M30S, EU-M30, or EU-M20, enabling medical facilities that already own one of these Endoscopic Ultrasound Systems to add rectal/anal endosonographic capability simply by acquiring one of these probes.
- Probe applicability:
 - 7.5 MHz—Staging of cancer in terms of potential tumor involvement and spread. Presence/Absence of lymph node metastasis. Abscesses around the anus (especially useful for confirmation of lesions around the rectum and anus)
 - 12 MHz—Staging of cancer in terms of potential tumor involvement and spread. Presence/Absence of lymph node metastasis. Dysfunctional anal sphincter and anal fistula (especially useful for confirmation of rectal and anal walls)
- Also suitable for pre-operative examination before rectal and anal surgery.



(7.5MHz)



(12MHz)

Specifications

Model Name	RU-75M-R1	RU-12M-R1
Display mode	B-mode	
Scanning method	Mechanical, radial scanning	
Scanning direction	Perpendicular to the direction of insertion	
Frequency	7.5MHz	12MHz
Contact method	Balloon method Sterile de-aerated water immersion method Probe-cover method	
Length of insertion section	150mm	
Total length	1.8m	
Maximum diameter of distal end cap	ø11.8mm	
Maximum diameter of insertion section	ø12.0mm	

Olympus business areas

	Medical and health-care area
	Imaging and information area
	Industrial applications area

OLYMPUS®

FOCUS ON LIFE

OLYMPUS OPTICAL CO., LTD.
2951 Ishikawa-cho, Hachioji-shi, Tokyo 192-8507, Japan
OLYMPUS OPTICAL CO. (EUROPA) GMBH.
Postfach 10 49 08, 20034 Hamburg / Wendenstrasse 14-18, 20097 Hamburg, Germany
OLYMPUS AMERICA INC.
2 Corporate Center Drive, Melville, N.Y. 11747-3157, U.S.A.
OLYMPUS KEYMED
Keymed House, Stock Road, Southend-on-Sea, Essex SS2 5QH, England
OLYMPUS SINGAPORE PTE LTD.
491B River Valley Road #12-01/04, Valley Point Office Tower, Singapore 248373
OLYMPUS HONG KONG AND CHINA LIMITED.
Room 1520-1527, Ocean Centre, 5 Canton Road, Tsimshatsui, Kowloon, Hong Kong
OLYMPUS BEIJING REPRESENTATIVE OFFICE
Rm. 818, South Tower, Beijing Kerry Centre, No.1 Guanghua Road, Chaoyang District, Beijing, 100020, China
OLYMPUS MOSCOW LIMITED LIABILITY COMPANY
117071, Moscow, Malaya Kaluzhskaya 19, bld. 1, fl.2, Russia
OLYMPUS AUSTRALIA PTY. LTD.
1/104 Ferntree Gully Road, Oakleigh, VIC 3166, Australia

<http://www.olympus.com>