

OLYMPUS®

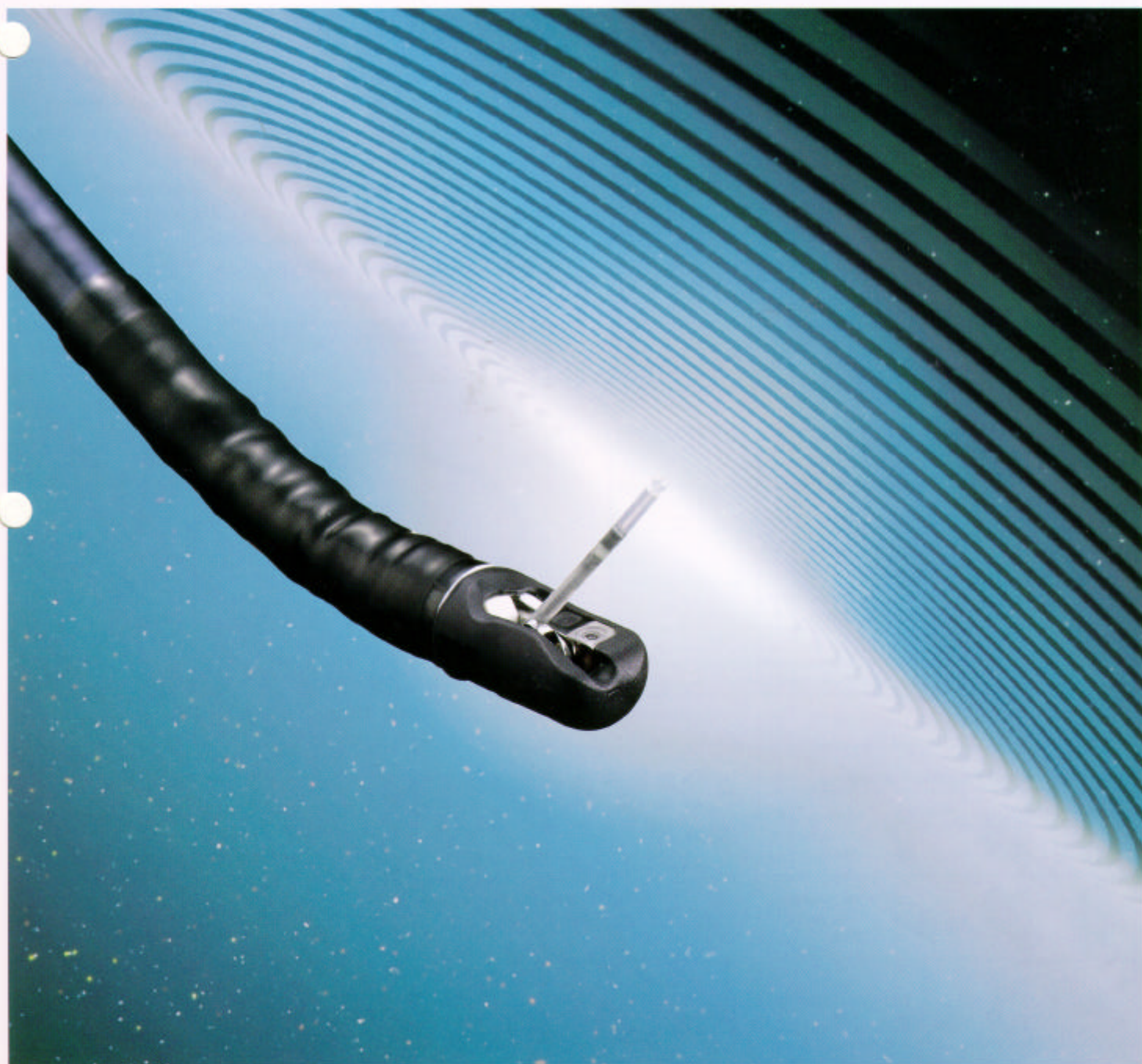
Olympus is about life. About photographic innovations that capture precious moments of life. About advanced medical technology that saves lives. About information- and industry-related products that make possible a better living. About adding to the richness and quality of life for everyone. Olympus. Quality products with a **FOCUS ON LIFE**

ULTRASONIC
PROBE

NEW
PRODUCT

ULTRASONIC PROBE UM-S20-20R

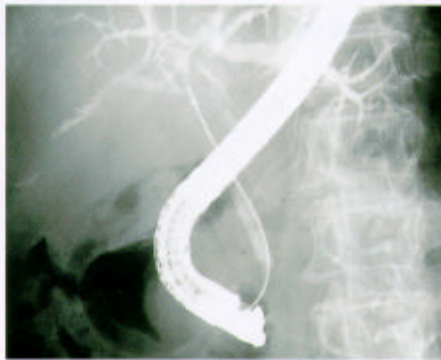
An Ultra-Slim Ultrasonic Probe Facilitates Ultrasound Examination
into Tight Strictures of Pancreatobiliary Ducts



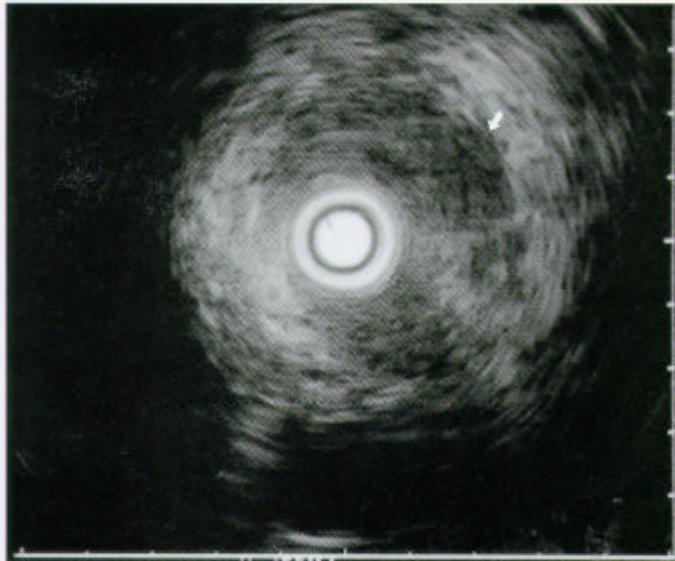
Expanding Endoscopic Ultrasonography—Introducing the UM-S20-20R, an Extra-Slim 1.7mm Ultrasonic Probe That Fits through a 2.2mm Diameter Channel of a Standard Endoscope



Transpapillary insertion of UM-S20-20R without EST



Ultrasound examination



Biliary cancer

Specifications

Display Mode	B-Mode
Scanning Method	Mechanical,Radial Scanning
Scanning Direction	Perpendicular to the direction of insertion, 360° Scanning
Frequency	20MHz
Contact Method	De-aerated Water Immersion Method/Direct Contact Method
Working Length	2050mm
Total Length	2140mm
Insertion Tube Outer Diameter	1.7mm(Distal end side 850mm) 2.0mm(Proximal side)
Insertion Tube Max. Outer Diameter	2.0mm
Channel Inner Diameter	2.0mm CH scopes with working length less than 600mm 2.2mm or more except for L-length Colonoscope

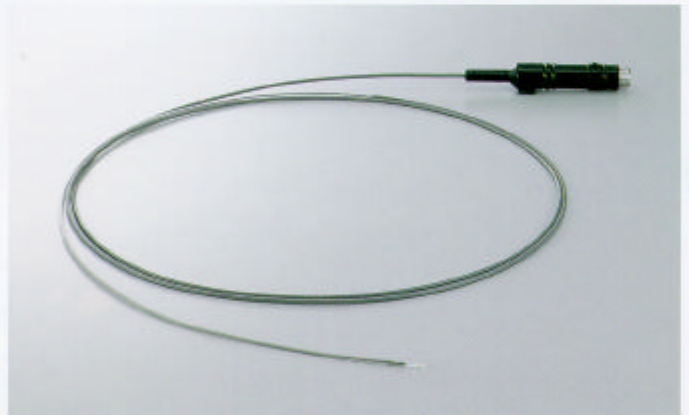
ULTRASONIC PROBE UM-S20-20R

As more physicians become experienced with the diagnostic capabilities of endoscopic ultrasonography, the demand is rising for new tools to expand the applicability of this powerful new procedure. Olympus has developed an ultra-slim ultrasonic probe that expands the benefits of ultrasonography into narrow lumens. Measuring only 1.7mm across at the distal end, the UM-S20-20R Ultrasonic Probe can be easily inserted through a standard endoscope with a 2.2mm diameter channel*, making it ideal for insertion into narrow passages such as the pancreatobiliary ducts.

Features

- 1) Slim design is particularly effective for insertion into the pancreatobiliary ducts.
- 2) Distal end diameter of 1.7mm and maximum insertion tube diameter of 2.0mm allows use with applicable endoscope channel diameters of 2.2mm or more* (except in the case of colonoscopes with L working length).
- 3) 20MHz offers detailed, high-resolution ultrasonography.
- 4) Ultrasound images easily obtained during routine examinations when combined with the EU-M30 or EU-M20 Endoscopic Ultrasound Center.

*The UM-S20-20R can also be inserted into the Olympus CHF-P20Q Cholangiofiberscope with a 2.0mm diameter channel.



Olympus business areas



Medical and health-care area



Imaging and information area



Industrial applications area

OLYMPUS®

FOCUS ON LIFE

OLYMPUS OPTICAL CO., LTD.
Sen-Ei Building, 22-2, Nishi-Shinjuku 1-Chome, Shinjuku-ku, Tokyo, Japan
OLYMPUS OPTICAL CO. (EUROPA) GMBH.
Postfach 10 49 08, 20034 Hamburg / Wendenstrasse 14-15, 20097 Hamburg, Germany
OLYMPUS AMERICA INC.
2 Corporate Center Drive, Melville, N.Y. 11747-3157, U.S.A.
OLYMPUS KEYMED
Keymed House, Stock Road, Southend-on-Sea, Essex SS2 5QH, England
OLYMPUS SINGAPORE PTE LTD.
451 B River Valley Road #12-01/04 Valley Point Office Tower, Singapore 348373
OLYMPUS BEIJING REPRESENTATIVE OFFICE
Room No. 3410 Beijing Jing Guang Centre, Hu Ji Lou, Chao Yang Qu, Beijing, China
OLYMPUS MOSCOW CORPORATION
117071, Moscow, Malaya Kaluzhskaya 19, Bld. 1, R.S. Russia
OLYMPUS AUSTRALIA PTY. LTD.
1/104 Fernree Gully Road, Oakleigh, VIC 3166, Australia